

Accelerating admission success

Streamlining entrance
exams for educational
institutions



Contents

- 1.** | Introduction
- 2.** | Navigating the evolving landscape of entrance examinations
- 3.** | Rethinking entrance exams: The key to enhanced efficiency
- 4.** | Facilitating the transition to online examinations
- 5.** | The pillars of an efficient entrance examination process
- 6.** | Empowering education: Redefining the examination experience
- 7.** | Transforming exam integrity: Utilizing technology for secure and scalable testing solutions
- 8.** | Comprehensive analysis and results reporting
- 9.** | Continuous improvement: Best practices for entrance exam excellence
- 10.** | Conclusion

Chapter 1

Introduction

The entrance examination process is a critical gateway for students seeking admission to educational institutions. However, for many universities and academic institutions, traditional examination methods create significant challenges, from logistical complexities and high administrative costs to concerns about integrity and security. These academic institutions continuously strive to provide a seamless and equitable admission experience, which increases the need for efficient and technology-driven solutions.

A structured entrance exam process helps identify suitable candidates and sets the benchmark for an institution's commitment to excellence, transparency, and innovation.

The global shift toward online assessments is rapidly transforming how entrance exams are conducted. With the online examination software market valued at US\$6.71 billion in 2024 and projected at US\$13.3 billion by 2031 at a compound annual growth rate (CAGR) of 9.01%, it's evident that institutions are embracing technology to streamline processes ⁽¹⁾.

AI-assisted proctoring, automated grading, and adaptive testing are revolutionizing the way exams are conducted, reducing administrative challenges while improving security and accessibility. This ebook will explore strategies for optimizing entrance exams, ensuring a smooth, scalable, and student-friendly admission process that aligns with the growing education landscape.

What's in it for the readers:

An in-depth understanding of the evolving landscape of entrance examinations.

Innovative strategies to enhance the efficiency of the examination process.

Technology like AI-assisted proctoring and adaptive testing reshaping exams.

Optimizing entrance exams to ensure a smooth admission experience.

Success stories highlighting effective implementations of new examination methods.

Ongoing improvements to maintain effectiveness in entrance examinations.

Chapter 2

Navigating the evolving landscape of entrance examinations



Educational institutions rely on various entrance exams, including standardized and specialized tests, to assess applicants.

Institutions face risks related to errors, fraud, and administrative burdens, impacting operational effectiveness.

Manual processes, paper-based assessments, and time-intensive evaluations create inefficiencies and scalability challenges.

Students encounter stress, delays in results, and accessibility barriers, which can affect their experience and enrollment decisions.

Entrance examinations are a critical factor in the admissions process, helping academic institutions select students based on their potential, skills, and knowledge. The format and execution of these exams vary significantly across different educational institutes. While some rely on standardized tests like the SAT, GRE, or GMAT, others prefer specialized exams tailored to specific fields, such as law, medicine, or engineering. Some universities also conduct specific tests to assess applicants based on a unique admission criterion. Despite these variations, the common goal remains the same, ensuring an efficient and robust selection process.

Addressing the challenges faced by institutions in managing entrance examinations

Conducting traditional, paper-based entrance exams creates significant bottlenecks in terms of administration, security, and efficiency of the process. One of the most pressing challenges is the manual effort required to organize and oversee these examinations. Staff members have to handle logistics, from scheduling and venue management to invigilating and grading. This creates a heavy administrative burden, diverting resources from other critical academic and operational functions.

Paper-based exams add to the inefficiency, as they require extensive time for evaluation and manual grading, which increases the risk of human error and causes inconsistencies in scoring.

Academic institutes may experience scalability challenges due to traditional processes. Expanding entrance examinations to accommodate a larger applicant pool often means higher costs, increased staff involvement, and additional logistical issues.

Traditional exams are vulnerable to fraud, including cheating and impersonation. Ensuring impartial execution requires stringent invigilation, which may not be evenly implemented across multiple exam locations.

Therefore, the risk of question leaks or unauthorized assistance is increased.

The effects of traditional examination methods on student performance

The shortcomings of traditional entrance exams may impact students' performance and experience. High-stakes testing environments, long waiting periods for results, and accessibility challenges contribute to stress in students.

Further, delays in scoring and admissions decisions can derail students' academic planning, as they may need to wait longer before securing enrollment in their desired programs.

Accessibility remains a significant issue, particularly for students in remote or underserved areas. Travel costs, accommodation expenses, and logistical barriers can make it challenging for some groups of students to participate in in-person exams. Students with disabilities may face issues due to the lack of accommodation in traditional exam settings, limiting their opportunities to perform to their full potential.

Studies indicate that the adoption of online entrance examinations has led to a broader spread in student performance metrics.

One study found that the performance of students improved by 9.1%-9.8% points when exams were moved online, suggesting that online exams may provide an efficient and accurate measure of student capabilities ⁽²⁾.

From traditional to digital: The evolution of the online evaluation market

The online exam proctoring market is expected to reach US\$2.83 billion by 2031, growing at a CAGR of 16.7% from 2023 to 2031 ⁽³⁾.

This increase reflects the improving trust in technology that enhances exam security, streamlines grading and improves accessibility.

As academic institutions navigate the evolving landscape of entrance examinations, the shift toward online assessments provides a path to improved efficiency, examination integrity, and inclusivity.

[Connect to an expert](#)

Chapter 3

Rethinking entrance exams: The key to enhanced efficiency



Educational institutions rely on various entrance exams, including standardized and specialized tests, to assess applicants.

AI-assisted security measures prevent fraud and ensure unbiased evaluations.

A modernized, transparent system fosters trust among students, parents, and regulatory bodies.

Enhanced student experience leads to higher satisfaction rates and improved enrollment outcomes.

The entrance exam process is pivotal in the admissions journey, shaping both institutional operations and student experiences. However, traditional methods often introduce inefficiencies, administrative burdens, and concerns about exam integrity. Streamlining entrance exams with technology and process improvements can significantly enhance the efficiency, credibility, and accessibility of educational examinations. This shift simplifies the examination process for administrators and improves outcomes for students, reinforcing the institution's reputation as a forward-thinking, student-centric organization.

Driving operational excellence

Digitizing entrance examinations empowers educational institutes to reduce administrative costs and labor. Traditional exams require extensive coordination, including venue bookings, printing and distributing test papers, hiring invigilators, and manually grading responses. These processes demand substantial time and resources, increasing the admissions budget.

Adopting Mercer | Mettl's customizable examination platform allows academic institutions to automate result generation, examination scheduling, and grading.

This reduces the need for manual oversight and physical infrastructure, allowing evaluators to focus on other critical areas of entrance exams.

Optimizing student journey

For students, the entrance exam experience can be stressful, particularly when dealing with complex registration processes, rigid schedules, and long wait times for results. Traditional paper-based exams often create logistical challenges, requiring students to travel to designated test centers, sometimes across larger distances. This can be costly and time-consuming, potentially discouraging qualified candidates from applying.

A streamlined, technology-driven exam process offers a more convenient and transparent alternative. Studies show that 75% of students believe online examinations save time, while 87.5% find them more economical than paper-based exams. Additionally, 87.5% of students appreciate faster access to their results, and 78.1% trust online assessments more than traditional methods ⁽⁴⁾.

Leveraging online entrance exams by Mercer | Mettl with automated result processing can help institutions provide quicker feedback, reduce stress for applicants and help them plan their academic future effectively.

Elevating institutional credibility

Today, an academic institution's credibility is the key to attracting top talent. A seamless, modern entrance exam process signals professionalism, innovation, and a commitment to student success. Institutions that embrace online assessments demonstrate their ability to adapt to technological advancements, reassuring students that they are choosing a forward-thinking academic environment.

Academic institutions that offer a hassle-free, secure testing experience are more likely to gain the trust of international applicants.

With Mercer | Mettl's remote proctoring solution and flexible exam scheduling, universities can expand their reach, attracting diverse and highly qualified candidates from different regions.

This global accessibility strengthens the institution's reputation as an inclusive and technologically advanced center for learning.

Fostering objectivity and integrity

A prominent challenge in traditional entrance exams is the risk of fraud, cheating, and grading inconsistencies. Manual invigilation and paper-based grading can be prone to human error, bias, and security breaches, leading to unfair advantages for some candidates.

Technology-driven entrance exams offer robust solutions to uphold integrity.

Mercer | Mettl's AI-assisted proctoring tools monitor test-takers in real time, detecting suspicious behavior and preventing misconduct.

Automated grading ensures objective evaluation, reducing the likelihood of errors and inconsistencies. These advancements create a level playing field, ensuring that admissions decisions are based on merit.

Chapter 4

Facilitating the transition to online examinations



Institutions must equip evaluators with the right tools and training to adapt to online examinations and proctoring solutions.

AI-assisted tools can help detect patterns, plagiarism, and inconsistencies, enhancing the integrity of the examination process.

With academic institutions transitioning to online entrance exams, evaluators must adapt to new tools and workflows. Moving from traditional paper-based assessments to digital platforms requires a shift in mindset, technical skills, and grading methods. Using optimum strategies can enable evaluators to embrace this change smoothly while maintaining accuracy and integrity in assessments. A structured and planned transition ensures seamless execution, minimizes resistance, and maximizes the effectiveness of online examination systems.

Embracing change: Adapting to the online evaluation era

For many evaluators, the biggest adjustment is learning to navigate the online grading systems. Unlike paper-based exams, online assessments often use automated grading for multiple-choice and structured responses, reducing manual workload. However, for subjective answers, evaluators must familiarize themselves with digital annotation features to ensure efficient evaluation. Training programs and hands-on practice with online grading platforms can help ease this transition.

Another key aspect of adapting to online evaluation is understanding remote proctoring systems. Evaluators may need to review flagged incidents from AI-assisted monitoring tools, verifying cases of potential misconduct.

This requires a balance between leveraging technology and applying human judgment to ensure integrity.

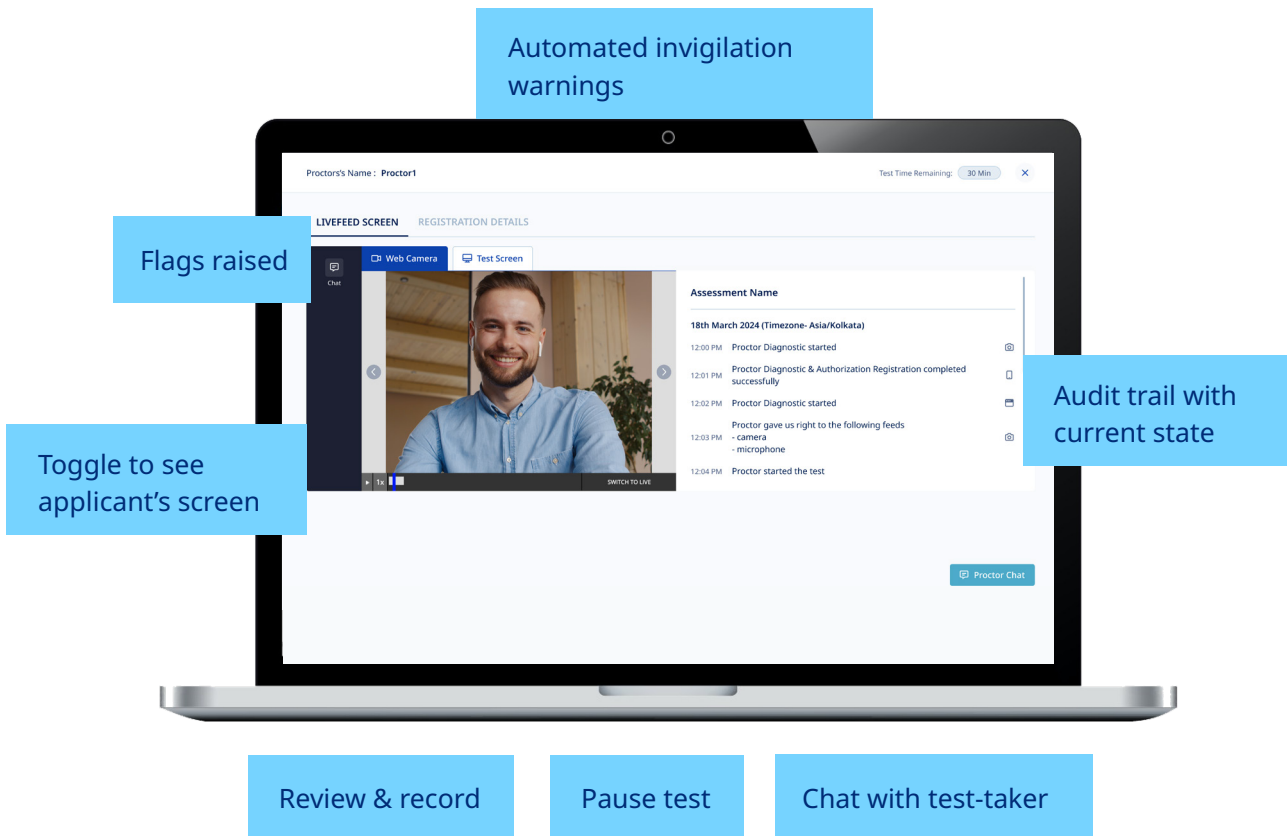
Enhancing efficiency and accuracy in evaluation

Online grading streamlines the evaluation process by organizing student responses, reducing errors, and enabling faster feedback. AI-assisted tools can help detect patterns, plagiarism, and inconsistencies, enhancing the integrity of the examination process.

Online evaluation allows for more flexible grading timelines, enabling educators to assess exams from any location without being tied to physical test centers.

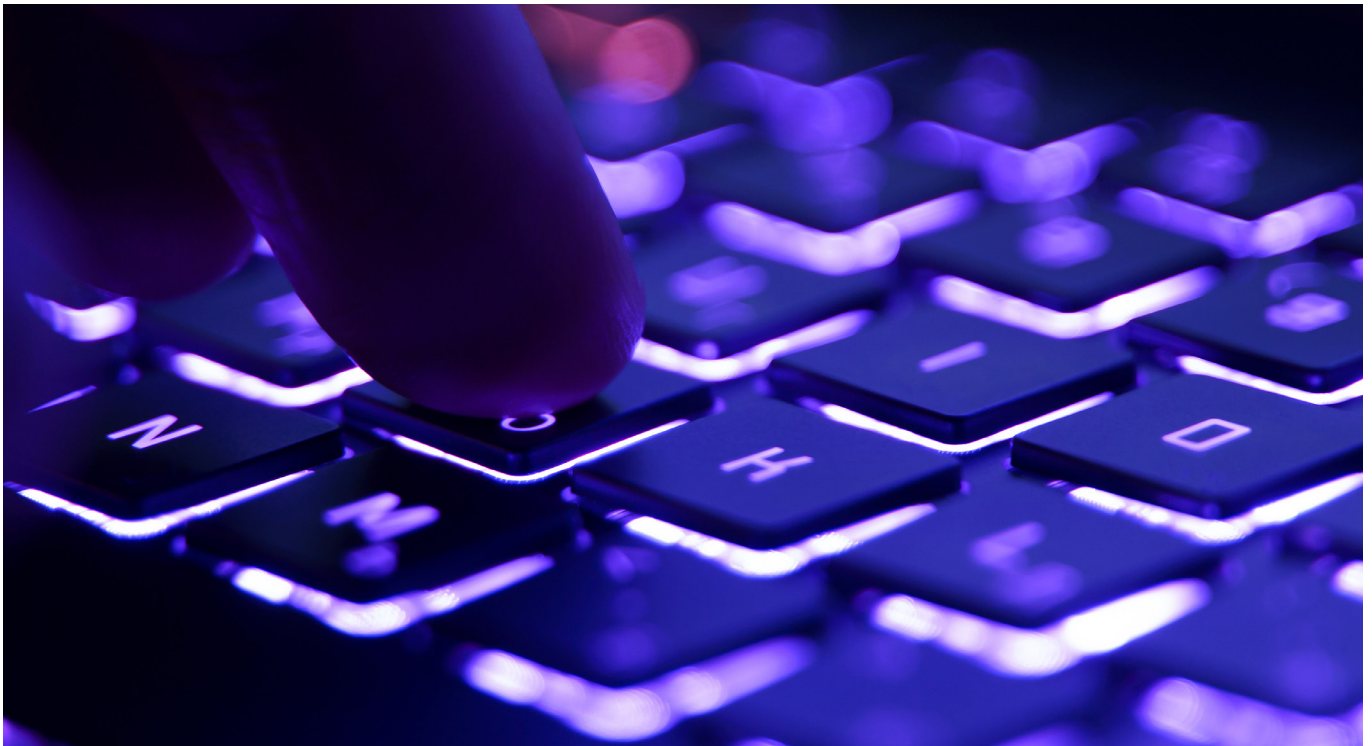
Embracing these technological advancements can enable evaluators to improve efficiency, maintain assessment integrity, and contribute to a seamless examination process.

Connect to an expert



Chapter 5

The pillars of an efficient entrance examination process



Digital exams streamline processes, reducing costs associated with traditional paper-based testing.

Centralized online platforms optimize exam scheduling, registration, and performance tracking.

AI-assisted proctoring solutions reinforce exam security and mitigate risks of malpractice.

Data-driven insights optimize exam structures and student evaluation methodologies.

A structured entrance examination process ensures efficiency, integrity, and accessibility while minimizing administrative burdens. With advancements in technology, institutions can now implement online solutions that streamline every stage of the examination process, from registration to result processing. The critical aspect of success lies in leveraging automation, centralized platforms, AI-assisted proctoring, and data analytics to create a seamless experience for students, evaluators, and administrators.

Pillar 1	Embracing the digital shift
Pillar 2	Unlocking exam efficiency
Pillar 3	Proctoring 2.0
Pillar 4	Driving continuous improvement

Embracing the digital shift: The rise of online entrance exams

Online examination portals allow students to take tests from anywhere, eliminating the need for physical test centers and reducing logistical challenges. Institutions can administer e-exams with built-in timers, question randomization, and automated grading, ensuring consistency and efficiency.

Mercer | Mettl's examination platform streamlines the entrance evaluation process with robust features, such as disconnection management, unidirectional test order, 360-degree background checks, intuitive dashboards, etc.

Proctoring 2.0: Advanced exam monitoring solutions

Ensuring exam integrity is one of the biggest challenges experienced by academic institutions.

AI-assisted proctoring tools by Mercer | Mettl offer a robust solution for monitoring students in real-time, detecting suspicious behavior, and flagging potential misconduct.

The solution helps analyze eye movement, background noise, and facial recognition data to generate AI flags, helping evaluators identify anomalies and take appropriate action.

Institutions can select AI-assisted proctoring with human oversight, a hybrid approach for a real-time view of test-takers' activities and environments. This method also enables one: many proctoring, striking a balance in AI-human synergy to ensure evaluation integrity.

Unlocking exam efficiency with centralized online platforms

An effective entrance exam process requires a centralized system where students can register, schedule their exams, and track their results. A central portal improves accessibility, reduces confusion, and enhances transparency for applicants. Institutions can further integrate payment processing, test preparation resources, and real-time exam updates, providing a comprehensive solution for students and administrators alike.

The Mercer | Mettl Student Portal provides a centralized solution to effectively manage and streamline the examination process.

It caters to students at every stage of their examination journey, simplifies their experience, and improves their academic interactions with the institution. Its powerful features and design focus on student needs and transform how students engage with exams, ensuring the process is transparent and efficient.

Driving continuous improvement in evaluations through data insights

Using data analytics from entrance tests empowers academic institutions to analyze student responses, time spent on questions, and exam performance trends. These insights help refine evaluation processes in the future.

Data analytics can additionally identify patterns in student performance, detect potential biases in question difficulty, and suggest improvements for future exams. Additionally, real-time monitoring of technical issues, such as connectivity problems or system errors, can enable institutions to optimize their platforms for a smoother test-taking experience.

Explore how Fortune Institute of International business achieved admission excellence



Established in 1995, the Fortune Institute of International Business (FIIB) has earned a reputation for excellence in management education, shaping over 2,500 students' lives through its experienced faculty and strong industry connections. To maintain its leadership, FIIB aimed to improve the quality of its student enrollment.

Business challenge

FIIB faced challenges in enhancing the quality and profile of its applicants. The existing admission criteria primarily focused on aptitude through competitive exams, failing to consider the holistic attributes necessary for future management professionals. Faculty concerns grew over personality issues among admitted students, leading to a need for a comprehensive evaluation process that assessed both skills and behaviors.

The impact

Enabled quantitative and qualitative assessments of a larger applicant pool.

Established benchmarks for refining the enrollment filtration process.

Provided L&D with detailed insights into students' personalities for customized training.

Laid the groundwork for future digitization of academic processes, optimizing resource use.

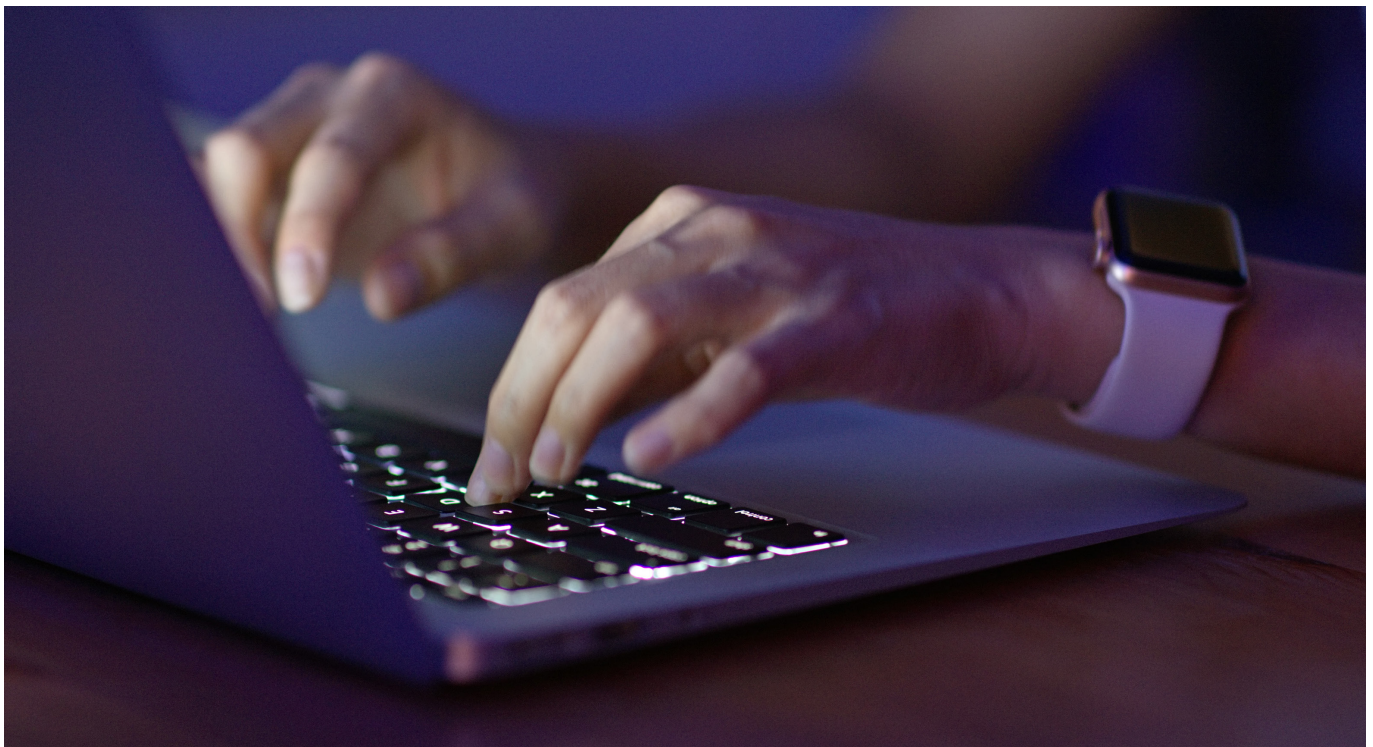
Solution

Collaborating with Mercer | Mettl, FIIB implemented a three-part approach to address these challenges:

- **Mercer | Mettl Personality Profiler (MPP):** This tool measured students' behavioral traits to provide better insights into their potential as management candidates. MPP's design helped filter applicants more effectively, focusing on key attributes relevant to academic success.
- **Assessment platform:** A user-friendly, robust platform to evaluate students' psychometric and cognitive abilities, facilitating targeted learning & development (L&D) initiatives. This approach allowed the identification of skill gaps and tailored learning to enhance employability.
- **AI-assisted proctoring:** To ensure academic integrity, Mercer | Mettl's advanced proctoring technology offered real-time monitoring, effectively detecting any instances of cheating and maintaining the authenticity of online assessments.

Chapter 6

Empowering education: Redefining the examination experience



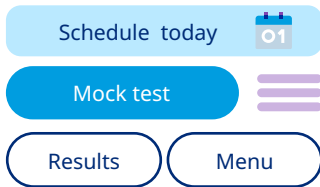
A user-centric approach improves accessibility and engagement through intuitive registration and testing platforms, ensuring a smooth experience for all students.

Precise, real-time communication minimizes uncertainty, and personalized exam schedules cater to diverse time zones and student needs, improving participation rates.

A seamless entrance exam experience is essential for reducing student stress, improving accessibility, and enabling candidates to perform to the best of their abilities. Therefore, as institutions shift to digital assessments, they must prioritize user-friendly interfaces, clear communication, and flexible scheduling to create a student-centric examination process. A structured exam system enhances student satisfaction and strengthens the institution's credibility by demonstrating a commitment to integrity, efficiency, and inclusivity.

The significance of user-friendly interfaces in evaluation

An intuitive and accessible online platform for registration and testing is imperative to enhance student experience. Complicated or poorly designed interfaces can create challenges, leading to registration errors, technical difficulties, and unnecessary stress before the exam begins.

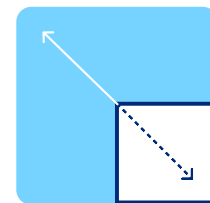


Easy navigation

Clear menu options for registration, scheduling, and accessing test instructions.



Mercer | Mettl's online examination platform offers a smooth, stress-free interface, enabling students to focus on the exam rather than worrying about technical barriers.



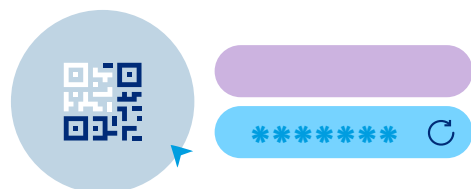
Mobile compatibility

Ability to register and access exam details from any device.



Accessibility features

Support for screen readers, adjustable text sizes, and multilingual options to accommodate diverse student needs.



Seamless login experience

Secure, hassle-free authentication with easy password recovery options.

Effective communication strategies for clarity and impact

Miscommunication or lack of timely updates can create confusion among students. Academic institutions must offer clear, structured communication from the moment students register until they receive their results.



Detailed guidelines

A comprehensive guide outlining exam format, rules, technical requirements, and best practices.



Regular reminders

Automated email notifications about upcoming deadlines, exam schedules, and necessary preparations.



Real-time updates

Instant notifications for any technical issues, schedule changes, or important announcements.



Dedicated support channels

A help desk or chatbot for answering queries related to registration, login issues, or technical difficulties during the exam.

Customized exam schedules for student empowerment

Every student may not take exams at the same time, especially in global institutions with applicants from different time zones. Offering personalized exam schedules ensures greater accessibility and convenience, making the process more inclusive.



Multiple exam slots

Allowing students to choose from a set of predefined test windows.



Consideration for specific needs

Providing accommodation for differently abled students, including extended time or alternative exam formats.

Mercer | Mettl solutions provide seamless options for improved student experience, including compensatory time for test-takers requiring accessibility accommodations and slot selection options that can be enabled by administrators.

[Connect to an expert](#)

Here's how Christ University conducted examinations at scale while enhancing exam integrity



CHRIST, a premier educational institution in Bengaluru, shifted its entrance examination process online for the 2020 batch, accommodating over 43,000 students globally. This transition was driven by the high infrastructural and operational costs associated with traditional, center-based exams. The onset of COVID-19 further necessitated an urgent migration to online solutions, leading CHRIST to explore solutions to meet its specific needs for integrity, security, and accessibility.

Business challenges

The institution faced several hurdles in its transition, including high costs, logistical challenges, and the need for a dynamic, scalable platform that could accommodate a large number of applicants simultaneously. The administration also required flexibility in proctoring and the ability to customize exam schedules without compromising exam integrity.

Solution

Mercer | Mettl offered the EXAMIN online proctoring system, which addressed CHRIST's unique requirements.

The platform automated various aspects of the examination, provided robust proctoring features, and facilitated seamless operations within a tight timeframe.

Key features included flexible scheduling, real-time monitoring by trained in-house staff, AI-assisted proctoring, and minimal bandwidth requirements, ensuring accessibility for every applicant.

The impact

70%

reduction in operational planning time.

Successfully transitioned over 43,000 students online.

Conducted over 100,000 hours of proctoring.

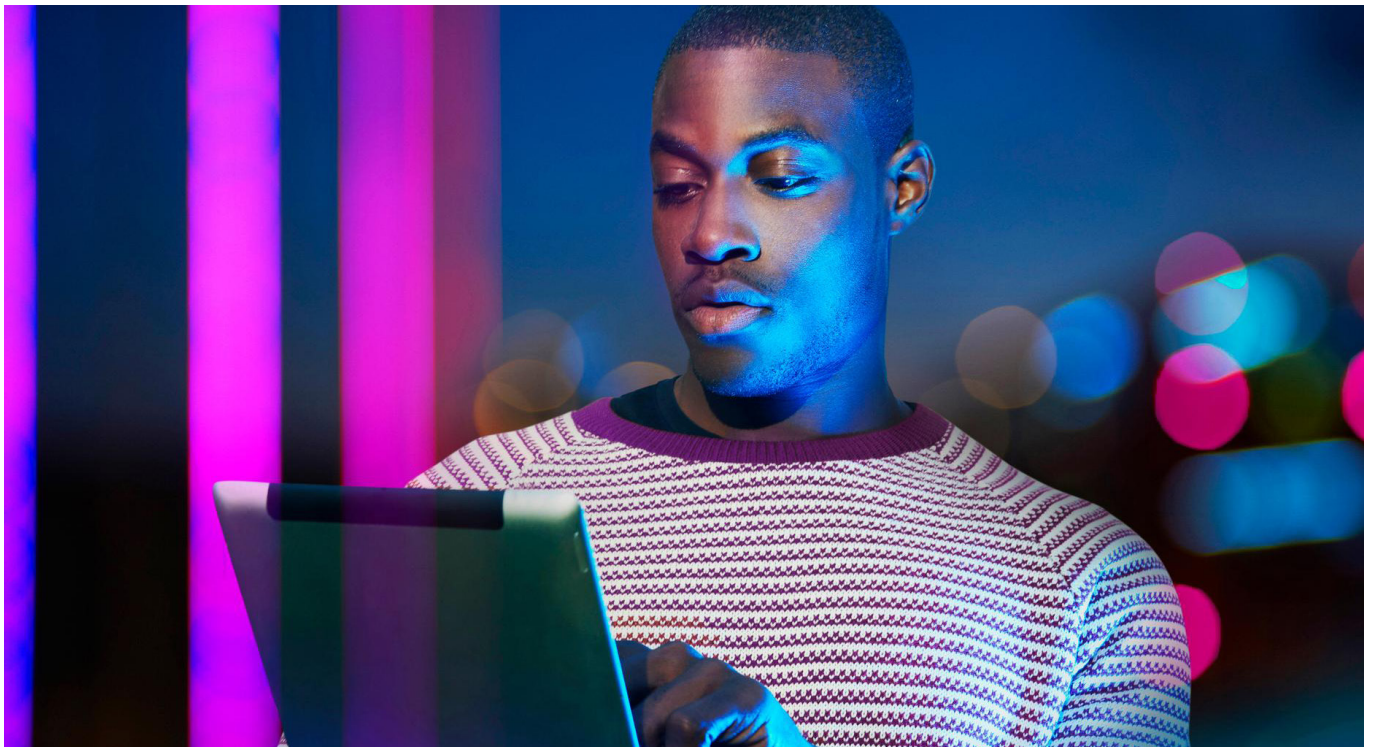
Achieved a 50% cost reduction compared to center-based exams.

Enabled 600+ in-house invigilators to monitor exams remotely.

Streamlined grading with automated functionalities.

Chapter 7

Transforming exam integrity: Utilizing technology for secure and scalable testing solutions



AI-assisted question design ensures objective assessments, reducing bias and subjectivity.

Automated grading accelerates result processing, increasing efficiency by up to 80%.

Advanced security measures, such as AI-assisted proctoring, uphold exam integrity.

Accessibility-focused design helps stay compliant with regulatory and inclusivity standards.

Technology advancements have transformed the way educational institutions design, administer, and evaluate entrance exams. Integrating robust security measures can create an efficient, secure, and scalable examination process. It can streamline operations and address concerns related to exam integrity, accessibility, and unbiased execution, ensuring a seamless experience for students, evaluators, and administrators.

Streamlining the grading process

Artificial intelligence can assist in crafting unbiased and diverse exam questions. AI algorithms can analyze existing question banks to identify patterns and ensure a balanced representation of topics. This approach helps in creating assessments that are comprehensive and unbiased.

Automating the grading process can additionally enhance efficiency and consistency. AI-assisted platforms can quickly evaluate multiple-choice responses, providing immediate feedback to students.

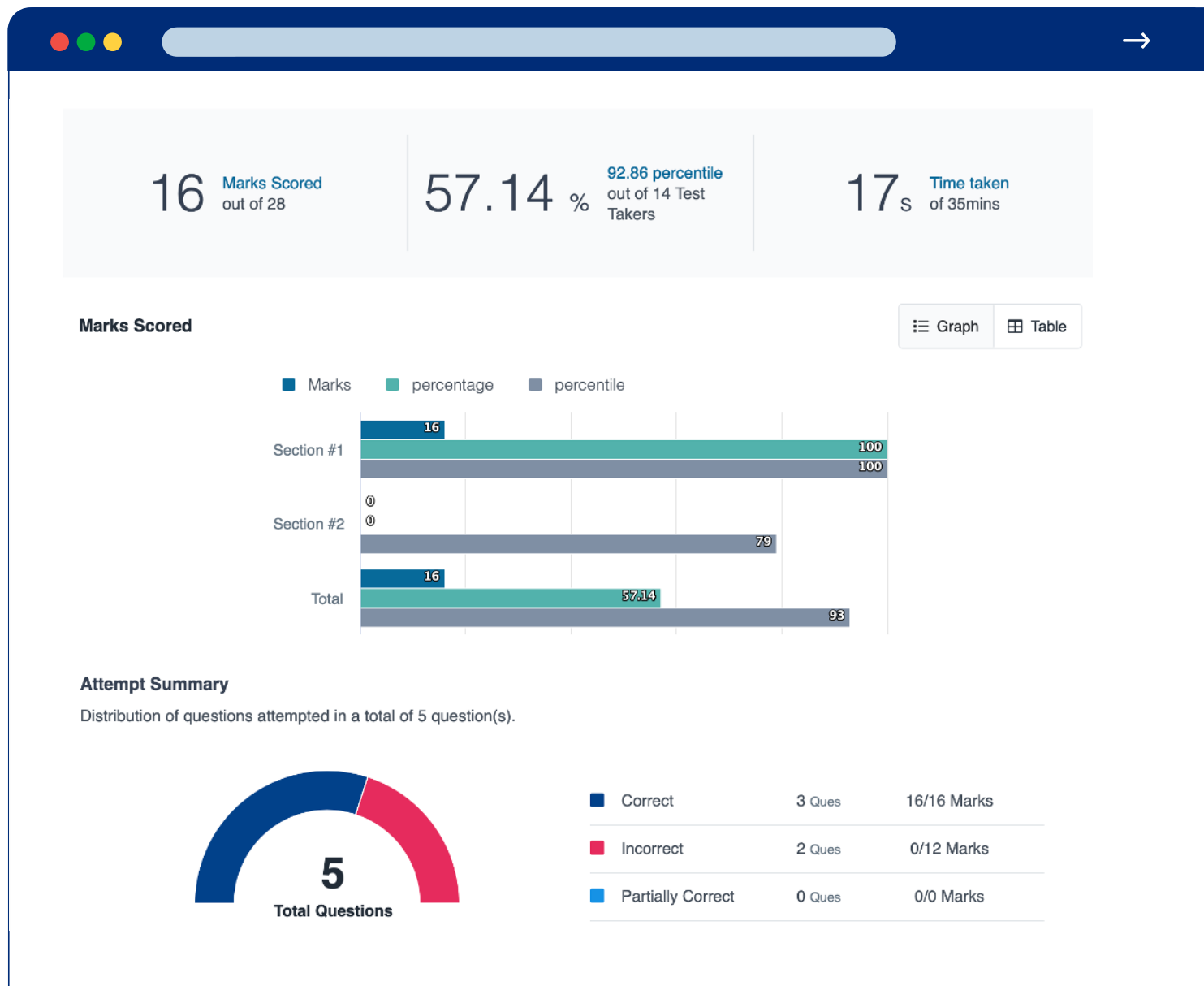
The Mercer | Mettl examination platform offers AI-assisted grading solutions that help educators evaluate assignments and provide timely feedback.

Navigating scalability for growing ecosystems

Implementing load balancing ensures that the examination platform remains operational even during peak usage times. These technologies streamline user traffic to prevent system overloads and minimize downtime.

Empowering accessibility features

Allowing students to customize exam settings, such as font size, background color, and time limits, accommodates diverse learning needs and preferences. This flexibility helps in creating an equal testing environment.



Innovative Mercer | Mettl solutions to redefine integrity and security

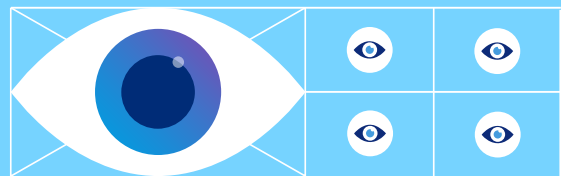


Biometric authentication

Biometric authentication, such as facial recognition, enhances the security of online exams by verifying the identity of the test-taker. This method ensures that the registered candidate is the one taking the exam, reducing the likelihood of impersonation.

Dual camera proctoring

Dual camera proctoring enables institutions to conduct secure online exams by monitoring students through a secondary phone camera for a 360-degree view. This tool can detect and prevent cheating by ensuring that students do not receive external assistance during the exam.



AI-assisted surveillance

AI-assisted surveillance monitors exam sessions in real-time, detecting suspicious behaviors, such as unauthorized device usage or unusual eye movements. Our tools can flag potential cheating incidents, allowing proctors to take appropriate action.

Exam lockdown browser

Mercer | Mettl Secure Browser is a web browser that helps maintain the integrity and security of online examinations.

It restricts test-takers' access to various functionalities on their devices that could compromise the examination process.

This includes locking the exam window, restricting access to other tabs, limiting keyboard shortcuts, and locking the screen capture software.

Proctoring the proctor

ProctorWatch revolutionizes the examination process by implementing a system where proctors are monitored during the examination, ensuring accountability and transparency. This allows for real-time oversight and evaluation of proctoring practices, helping to maintain a high standard of integrity in examinations. By enabling the proctoring of the proctor, this feature fosters trust among students, creating a secure testing environment.

Mercer | Mettl Secure Browser (MSB)



This is how AIMA improved examination integrity and student experience



The All India Management Association (AIMA) has been pivotal in advancing management education in India for over 60 years. The Management Aptitude Test (MAT) is its flagship program, serving as a standardized test for admission into top B-schools. Recognized by over 600 institutions nationally and internationally, MAT faced unprecedented challenges during the COVID-19 pandemic. AIMA had to rapidly pivot from traditional in-person exams to an online format, ensuring exam continuity while maintaining integrity.

Business challenges

Key challenges included reducing instances of cheating, enhancing the stakeholder experience, ensuring robust scalability, and addressing accessibility for students from remote locations.

Solution

98%



Mercer | Mettl provided a comprehensive solution combining AI and human proctoring to ensure exam integrity with a 98% cheating detection rate.

The platform featured secured browser capabilities and a user-friendly interface to accommodate the large volume of applicants. Customization and 24/7 support from Mercer | Mettl helped AIMA successfully transition to the online mode.

The impact

37% → 45%

The participation rate increased from 37% to 45% in Tier-3 and Tier-4 cities.

Over 35000+ applicants transitioned to online exams without technical issues.

The MAT exam was conducted as planned, ensuring students' career paths remained uninterrupted.

Enhanced outreach allowed more students from remote areas to participate.

[Connect to an expert](#)

Chapter 8

Comprehensive analysis and results reporting



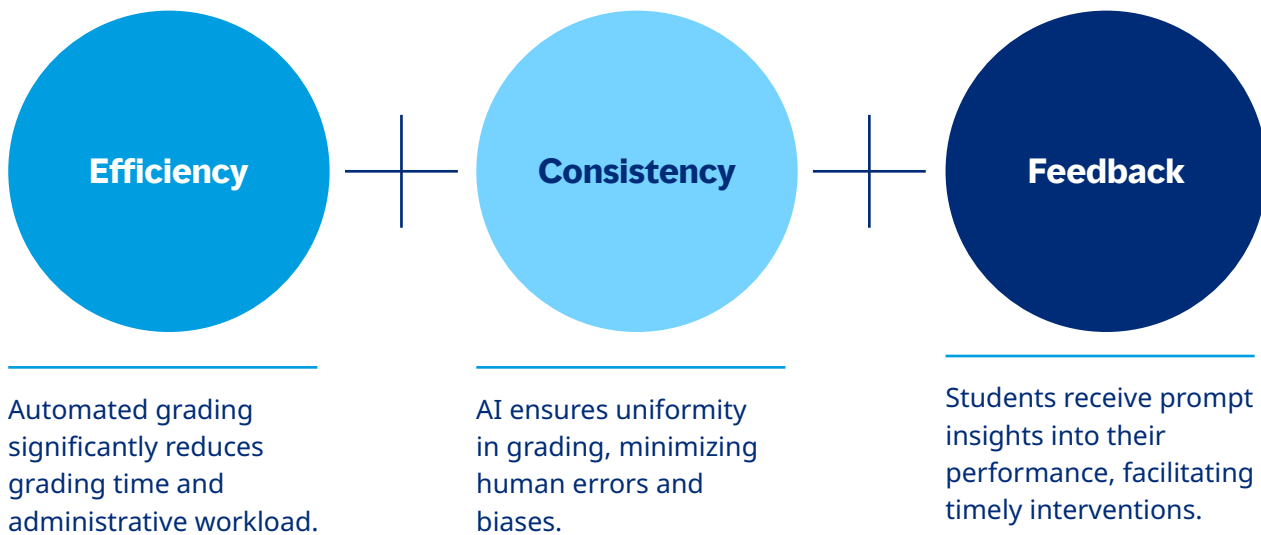
Automated grading systems reduce operational costs and improve turnaround times, and performance analytics refine exam structures and optimize future assessments.

A structured framework for handling disputes maintains institutional transparency and credibility, reinforcing the integrity of the examination process.

The ability to quickly and accurately analyze exam results is paramount for educational institutions. Leveraging technology to automate grading, provide immediate feedback, and utilize data analytics helps enhance transparency. Automation and data analytics further enable academic institutions to gain deeper insights into student performance trends, optimize examination accuracy, and streamline result communication.

Streaming success with automated result analysis

Automated grading systems have revolutionized the evaluation process, as these systems can assess various question types with remarkable speed and consistency.



A study found that AI grading can cut marking time by 80%, enabling educators to dedicate time to teaching and student engagement ⁽⁵⁾.

Harnessing data for improved decision-making

Advanced data analytics enables institutions to evaluate their exam processes. By analyzing patterns in student performance, educators can identify improvement areas and customize instructional strategies accordingly. For instance, exam score analysis reveals how students are performing, guiding curriculum development and teaching methods.

Identify effective strategies

Determine which teaching methods yield the best results.

Predict outcomes

Anticipate future performance and implement proactive measures.

Enhance curriculum design

Adjust course content to better meet student needs.

Handling result queries and discrepancies

Handling result queries and discrepancies is imperative for maintaining trust and transparency in the examination process. A structured system allows for effective communication between students and the administration, ensuring that any concerns regarding academic performance are addressed promptly and efficiently.

Submit inquiries

Easily report concerns regarding results.

Receive timely responses

Get prompt feedback on queries.

Submit re-evaluation

Seamlessly apply for re-evaluation of results.

Chapter 9

Continuous improvement: Best practices for entrance exam excellence



Implementing regular feedback loops fosters a culture of continuous enhancement and innovation.

Benchmarking against industry leaders enables institutions to adopt proven best practices.

Staying ahead of technological advancements ensures long-term operational efficiency.

Compliance with data privacy laws and accessibility standards strengthens institutional reputation.

Continuous improvement is essential for educational institutions aiming to enhance the efficiency and effectiveness of their entrance exam processes. A systematic approach to feedback, technology integration, benchmarking, and ethical compliance helps academic institutions with continuous improvement, fostering an environment of ongoing enhancement.

Creating continuous feedback channels

Establishing structured channels for feedback from both students and evaluators is critical to examination excellence.

Regular surveys, focus groups, and open forums can offer meaningful insights into the weaknesses and strengths of the current entrance exam processes. This feedback enables institutions to make informed decisions about necessary adjustments and improvements.

Identifying improvement areas

Feedback highlights specific aspects of the examination process that require attention, such as question clarity or technical issues.

Enhancing engagement

Involving administrators in the feedback process creates a sense of ownership and commitment to the institution's success.

Facilitating adaptability

Regular feedback allows academic institutions to respond promptly to emerging challenges and changing needs of the students.

Transforming with technology upgrades and adaptations

The rapid advancement of educational technologies necessitates that institutions continually assess and integrate new tools and platforms. Adopting the latest technologies can streamline administrative tasks, improve exam security, and enhance the user experience for both students and evaluators.

Key considerations for technology upgrades and adaptations are:



Scalability

New technologies should be able to accommodate the growing number of applicants and evolving entrance exam formats.



User training

The provider should offer comprehensive training for evaluators and administrators to maximize the benefits of new systems.



Data security

The new technology should have a robust security foundation to protect the sensitive information of students and proctors.

Setting standards: Comparative benchmarking with peer institutions

Benchmarking enables academic institutions to compare their examination processes with those of peer organizations. This practice can reveal innovative approaches, highlight best practices, and identify areas where the institution may be lagging.

Collaborative networks	Case studies	Performance metrics
Join professional associations and networks to share experiences and strategies with other institutions.	Analyze successful exam management models from similar institutions to understand potential improvements.	Utilize standardized metrics to objectively assess and compare exam outcomes and processes.

Ensuring compliance and upholding ethical standards

Ensuring that the exam process complies with local regulations, privacy laws, and ethical standards is fundamental. This adherence protects the institution legally and upholds its reputation and trustworthiness.



Data privacy

Securing personal and academic information in accordance with data protection laws.



Accessibility

Providing accommodation for differently abled students to ensure equitable access to exams.



Integrity

Implementing measures to prevent bias and discrimination in exam content and evaluation.

[Connect to an expert](#)

This is how Masai School conducted examinations at scale and improved efficiency



Founded in June 2019, Masai School is an outcome-driven career school focused on equipping youth with the skills necessary for the IT job market. With 1,500 graduates boasting a 97% placement rate and an average CTC of 7.37 lakhs per annum, the school currently caters to 7,000 students.

Business challenges

Masai encountered multiple challenges in scaling its operations, primarily due to limited resources that hindered the expansion of its question bank for student assessments. They recognized the necessity for a secure proctoring solution to enforce secure policies to control instances of cheating. Additionally, with student intake surging from 100 to 2,500, the complexity of scaling the interview process increased significantly. They also required a partner capable of evaluating candidates' spoken English skills specifically. For these requirements, they sought a customizable assessment platform to adapt to their evolving needs.

Solution

Mercer | Mettl provided a comprehensive suite of solutions:

- **Proctoring platform:**
An all-in-one platform that allows the conduct of over 200,000 exams daily, featuring anti-cheating measures and secure browsing.
- **Aptitude assessments:**
Access to a vast library of over 100,000 questions, along with customizable proctored assessments.
- **SpeechX:** A CEFR-based assessment tool that provides an efficient way to evaluate candidates' speaking abilities.

The impact

1K → 100K

Expanded the number of assessments conducted by 1,000 times, supporting up to 100,000 interviews daily.

Saved approximately 15,000 hours annually, providing a significant efficiency boost.

Ensured a secure examination environment, reducing instances of cheating significantly.

Implementation of SpeechX reduced manual assessment time equivalent to 8 years.

Chapter 10

Conclusion

The entrance examination landscape is undergoing a significant transformation, driven by technological advancements, evolving educational philosophies, and a growing emphasis on integrity and accessibility. As we look ahead, several key trends are poised to shape the future of entrance exams:

Integration of advanced technologies —•

The adoption of artificial intelligence (AI) and machine learning will revolutionize exam design, administration, and evaluation. AI can create unbiased exam questions, automate grading processes, and provide immediate feedback to students, enhancing efficiency.

AI-driven grading systems have been shown to reduce marking time by up to 80%, allowing educators to focus more on teaching and personalized student support (5).

Personalized and adaptive assessments —•

Future entrance exams are likely to become personalized, adapting to the individual learning styles of students. Adaptive testing, where the difficulty of questions adjusts based on the test-taker's responses, can provide an accurate assessment of a student's abilities and potential.

Enhanced accessibility and inclusivity —•

There is a growing commitment to making online entrance exams accessible to a diverse range of students, including those with disabilities. Implementing features like text-to-speech, alternative formats, and flexible timings can ensure that all candidates have an equal opportunity to demonstrate their capabilities.

Data-driven decision-making —•

Educational institutions are increasingly leveraging data analytics to make informed exam design and policy decisions. By analyzing performance trends and feedback, institutions can identify areas for improvement, optimize question quality, and enhance the exam experience.

Ethical and regulatory considerations —•

As technology becomes more integrated into the entrance examination process, ensuring the ethical use of data and compliance with privacy laws is paramount. Institutions must establish robust frameworks to protect student information and maintain the integrity of the assessment process.

Continuous improvement and feedback loops —•

Establishing regular feedback mechanisms for both students and evaluators will be crucial in the future. This approach enables continuous refinement of exam processes, ensuring they remain relevant, unbiased, and effective in assessing student potential.

The future of entrance exams is poised to be more personalized, efficient, and inclusive, leveraging technology to create an impartial and accurate assessment environment. By embracing these advancements and adhering to ethical standards, educational institutions can better serve the diverse needs of students and uphold the integrity of the admission process.

References

1. Verified Market Research. (n.d.). Online exam software market. July 2024 [↗](#)

2. Hill, A. J., & LoPalo, M. The effects of online vs in-class testing in moderate-stakes college environments. Economics of Education Review. February 2024 [↗](#)

3. Yahoo Finance. Online exam proctoring market. January 17, 2025 [↗](#)

4. Butler-Henderson, K., & Crawford, J. A systematic review of online examinations: A pedagogical innovation for scalable authentication and integrity. September 22, 2020 [↗](#)

5. University of Surrey. AI-driven academic marking tool unveiled, offering potential to enhance student learning outcomes. Published: November 30, 2023 [↗](#)

About us

At Mercer | Mettl, our mission is to enable organizations to make better people decisions across two key areas: acquisition and development. Since our inception in 2010, we have partnered with more than 6,000 corporates, 31 sector skills councils/government departments and 700+ educational institutions across more than 100 countries.

 mettlcontact@mercer.com

 www.mettl.com

Important notices

Be sure to carefully read and understand all of the disclaimers, limitations and restrictions before using the assessment services, reports, products, psychometric tools or the company systems or website.

Read the complete disclaimer here:
<https://pages.mettl.com/disclaimer>