

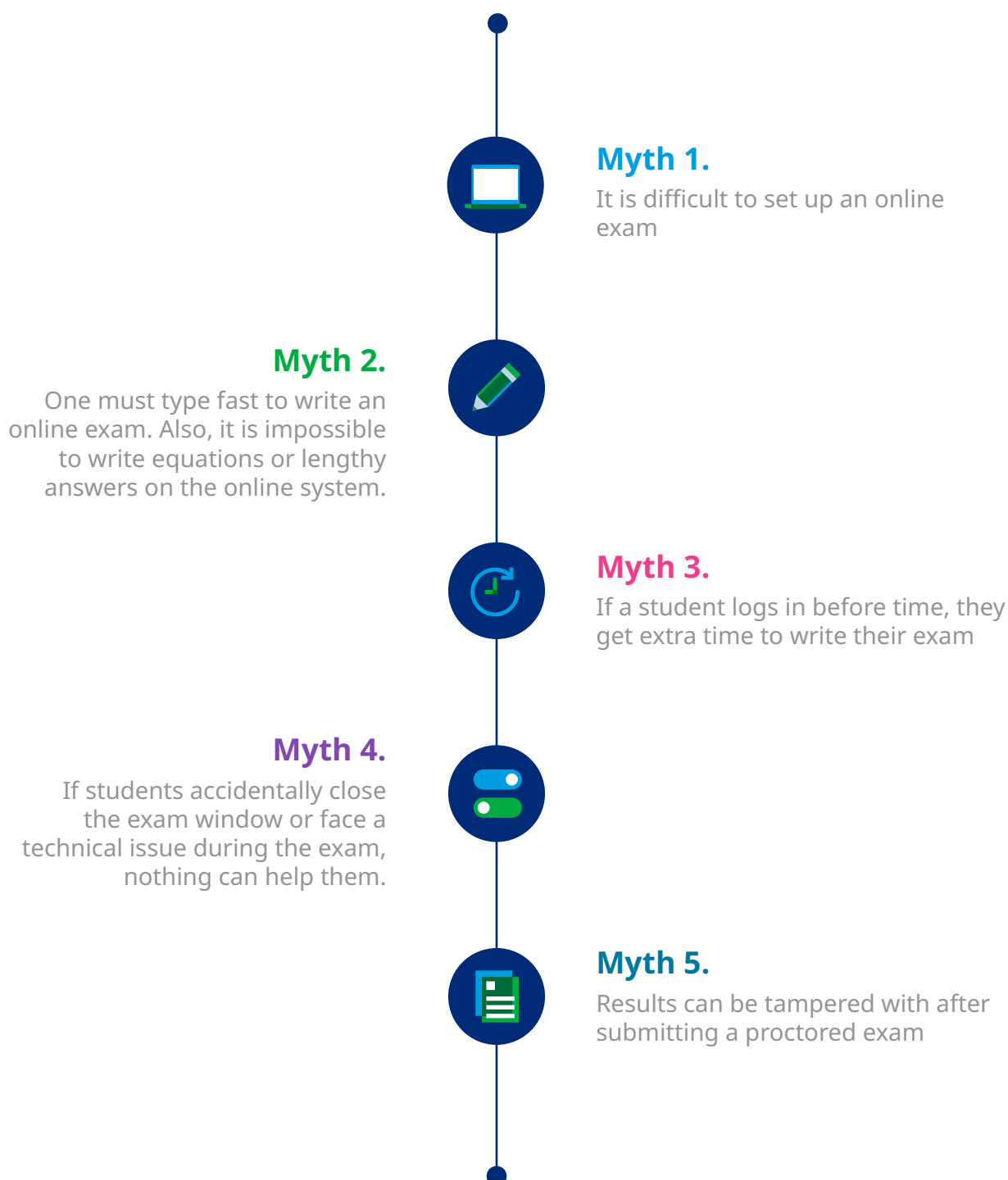
These **five myths** may be preventing your students from **taking an online exam**

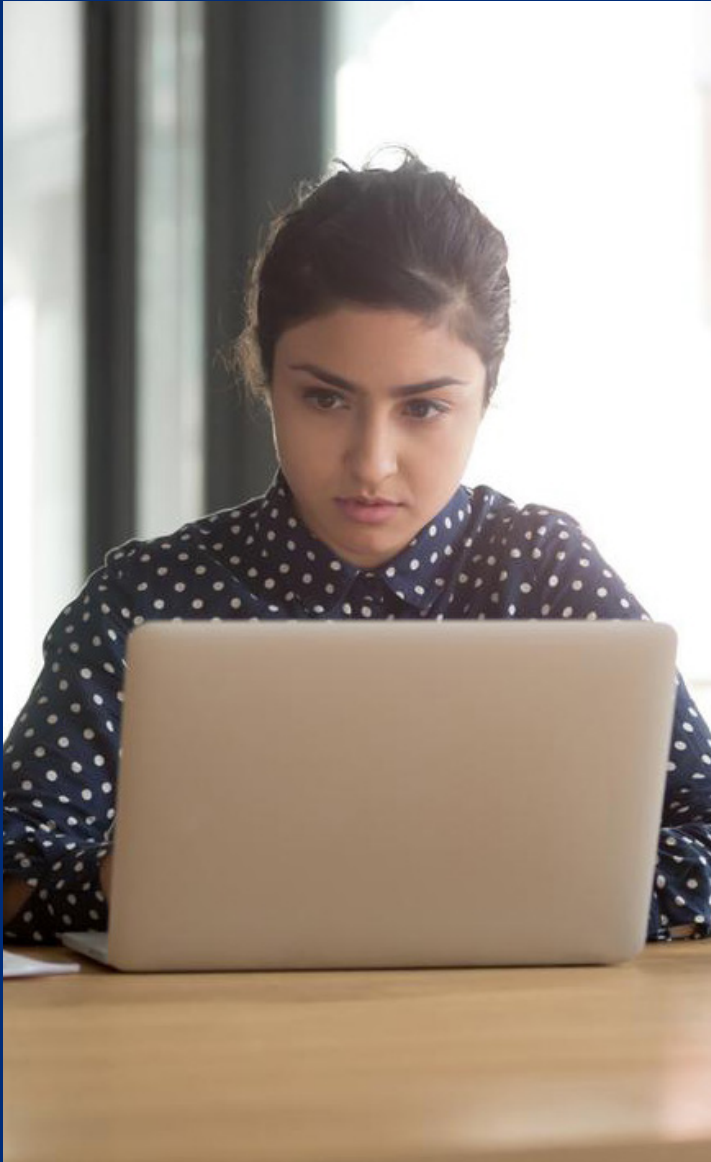


welcome to brighter

The mention of online exams causes anxiety and uncertainty among test-takers, which one may attribute to taking one's test in an unfamiliar environment, using computers and not the traditional pen-and-paper way. However, the present-day generation of students is much better acquainted with technology and understands its workings better than any other previous generations. So then, what is stalling their shift toward the online assessment ecosystem? Is inadequate understanding of processes or half-baked answers to their queries hindering their transition from offline to online?

Below are the top five myths about online exams that every student believes in, which makes them hesitant to sign up for any online assessment drive. The following clarifications will assuage their concerns and help maximize the effectiveness of taking exams online.





Myth 1.

It is difficult to set up an online exam

Setting up an online examination entails minimal requirements. Students don't need to download software and tutorials when taking their assessments on a user-friendly platform. Exams will run seamlessly on the applicants' systems, irrespective of their location, enabling them to take their tests from anywhere.

However, one must ensure the following before commencing an exam:

A compatible device ([desktop](#), [laptop](#))

A functional input device such as a [webcam](#) and [microphone](#)

Internet bandwidth of at least [512kbps](#)

OS- Windows OS or Mac OS

Browser: The latest version of Google Chrome

Additionally:

The candidate must sit in a [well-lit](#) and [quiet place](#)

They must ensure there are [no additional](#) or [unauthorized persons](#) in the exam room

They are [not allowed](#) to use any [unauthorized digital device](#) except the exam system in the exam room.

Myth 2.

One must type fast to write an online exam. Also, it is impossible to write equations or lengthy answers on the online system.

If students are accustomed to writing by hand than typing, they can write the answers on paper, scan the answer sheets using a QR code and upload the images using their phone. The answer sheets are uploaded directly onto the examiner's system, eliminating any possibility of a leak. Various subjects that involve writing exceptionally lengthy answers, drawing diagrams or solving equations ensure a level-playing field for all students taking their exams.

For those comfortable taking their exam online, platform and proctoring companies such as Mercer | Mettl offer top-notch online features, such as the Equation Editor. It allows students to key in their responses to format equations for math and chemistry. They can undertake complex and straightforward formulae writing, math equations, calculus, integration, differentiation, trigonometry and matrices, etc. - all chemical notation and equations online.



Myth 3.

If a student logs in before time, they get extra time to write their exam

An online proctored examination begins only at the scheduled time, no matter how early students log in to their systems. After teachers authorize students, they wait in the 'waiting room,' a page with customizable instructions and a prominently displayed 'test start' timer. Once the time is up, the test starts for all students at the same time. Beginning the test at the same time negates the possibility of some students using unfair means.

Myth 4.

If students accidentally close the exam window or face a technical issue during the exam, nothing can help them.

If students accidentally close their exam window, an exam usually starts from where they got disconnected, with the remaining time. However, we advise you to opt for a proctoring service provider that ensures no possibility of such an incident. For instance, Mercer | Mettl's Secure Exam Browser feature does not allow closing or minimizing the test window. Thus, a test-taker must finish the exam to move out of the test window.

Also, technical glitches such as power cuts, computer malfunction and internet instability are common. Hence, we advise informing the proctor/faculty about any technical issue during the exam. If a student does get disconnected during the exam, a dynamic customer support team should promptly resolve problems and minimize the glitch's impact on the exam. The exam starts again from where the glitch occurred -while the answers attempted already are auto-saved. The support team will ensure the student has the same time to take the remainder of the test despite the glitch.

Myth 5.

Results can be tampered with after submitting a proctored exam

The proctor/faculty receives an instant auto-generated report that highlights the candidates' results soon after they complete and submit their exams. All the data is stored on the cloud in a secure hosting environment; hence no one can tamper with it. Aside from the exam's score, the system also generates every student's integrity score that helps the institution maintain its intended academic integrity and ensures promoting or certifying only deserving exam-takers. Additionally, students do not have to wait for weeks or even months for their exams' results.

We are sure these quickfire questions and answers have wrestled facts from fiction. These insights will assuage your students' concerns and act as a tool for preparedness to drive a greater acceptance of online exam-taking with proctoring.



Connect with an expert

About us

At Mercer | Mettl, our mission is to enable organizations to make better people decisions across two key areas: acquisition and development. Since our inception in 2010, we have partnered with more than 4,000 corporates, 31 sector skills councils/government departments and 15+ educational institutions across more than 90 countries.

✉ mettlcontact@mercer.com

🌐 www.mettl.com

Robust Information Security System



Be sure to carefully read and understand all of the disclaimers, limitations and restrictions before using the assessment services, reports, products, psychometric tools or the company systems or website.

Read the complete disclaimer here:
<https://pages.mettl.com/disclaimer>

